

LANDMARK

PRE-CONSTRUCTION DEMOLITION MEETING

APRIL 13TH, 2022



PRE-CONSTRUCTION DEMOLITION MEETING

Agenda

- Current Project Timeline
- Infrastructure Entitlement Update
- Existing Structure Demolition
 - Transit Hub Relocation
 - Extent of Work
 - Schedule
 - Work Hours / Methods
 - Haul Routes
- Q&A

PRE-CONSTRUCTION DEMOLITION MEETING

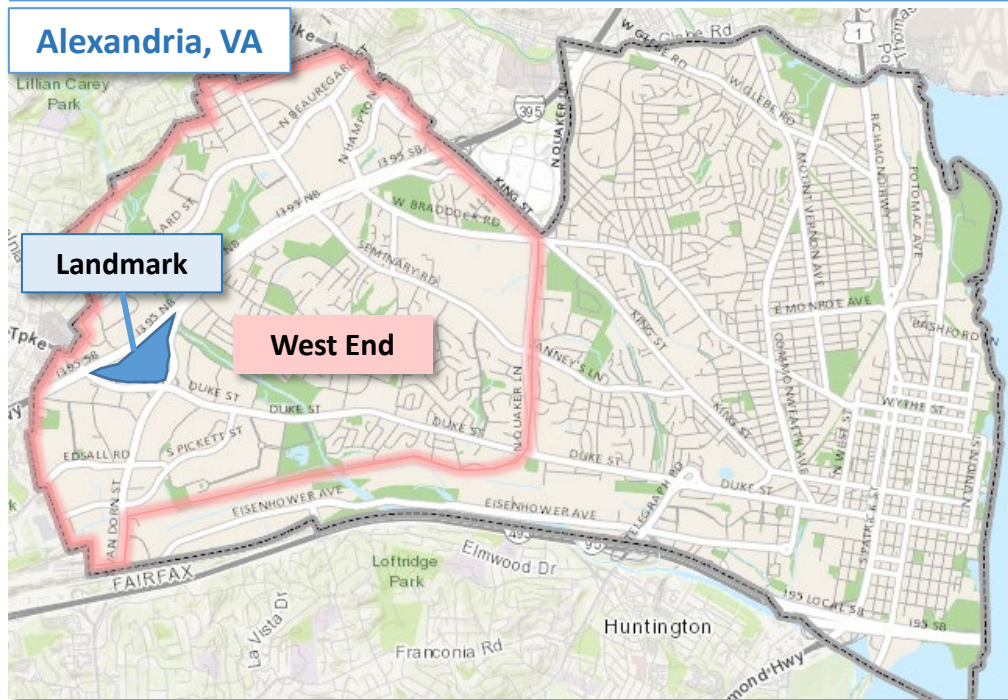
Current Redevelopment Timeline

[illegible]

PRE-CONSTRUCTION DEMOLITION MEETING

Rezoning Process – Infrastructure

Location & Background



Entitlement Process

CDD
*Coordinated Development
District*
COMPLETE



DSP
*Development Site Plan
(Infrastructure & Blocks)*
1 year

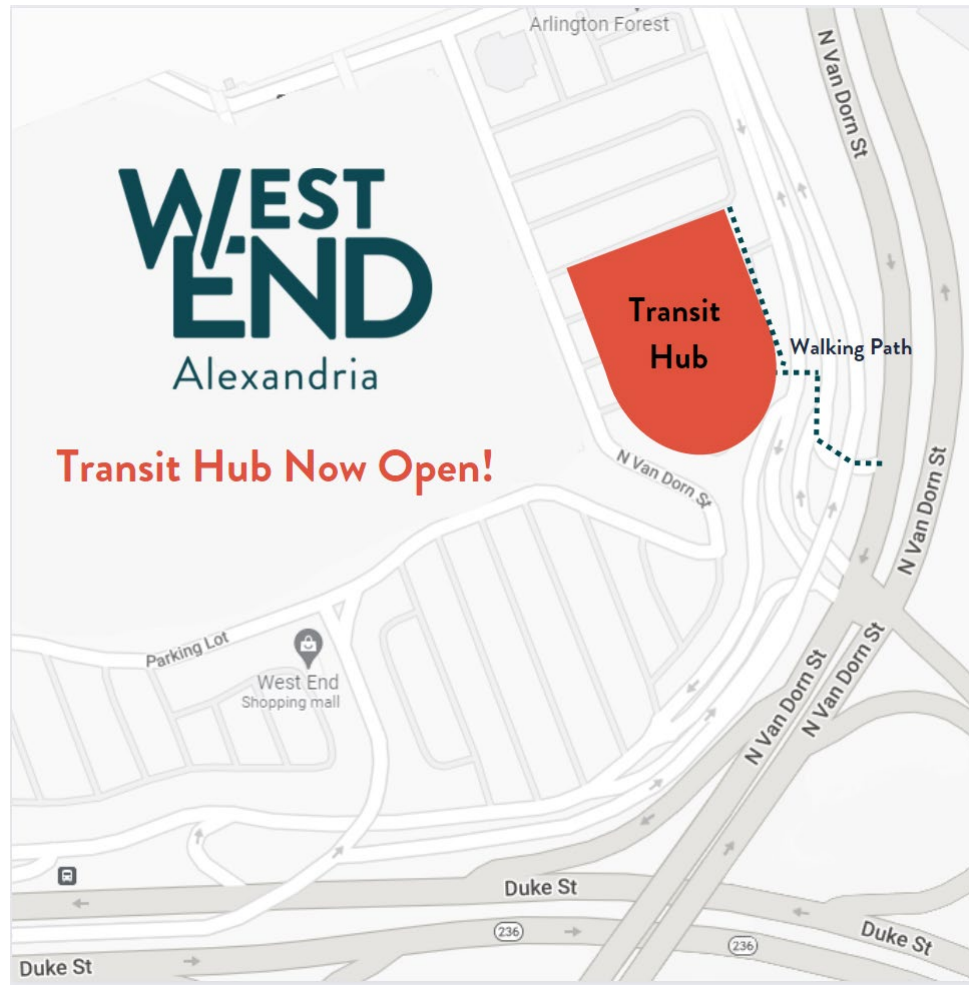


FSPs & Permits
*Final Site Plans &
Construction Permits*
1-2 years

Degree of Detail

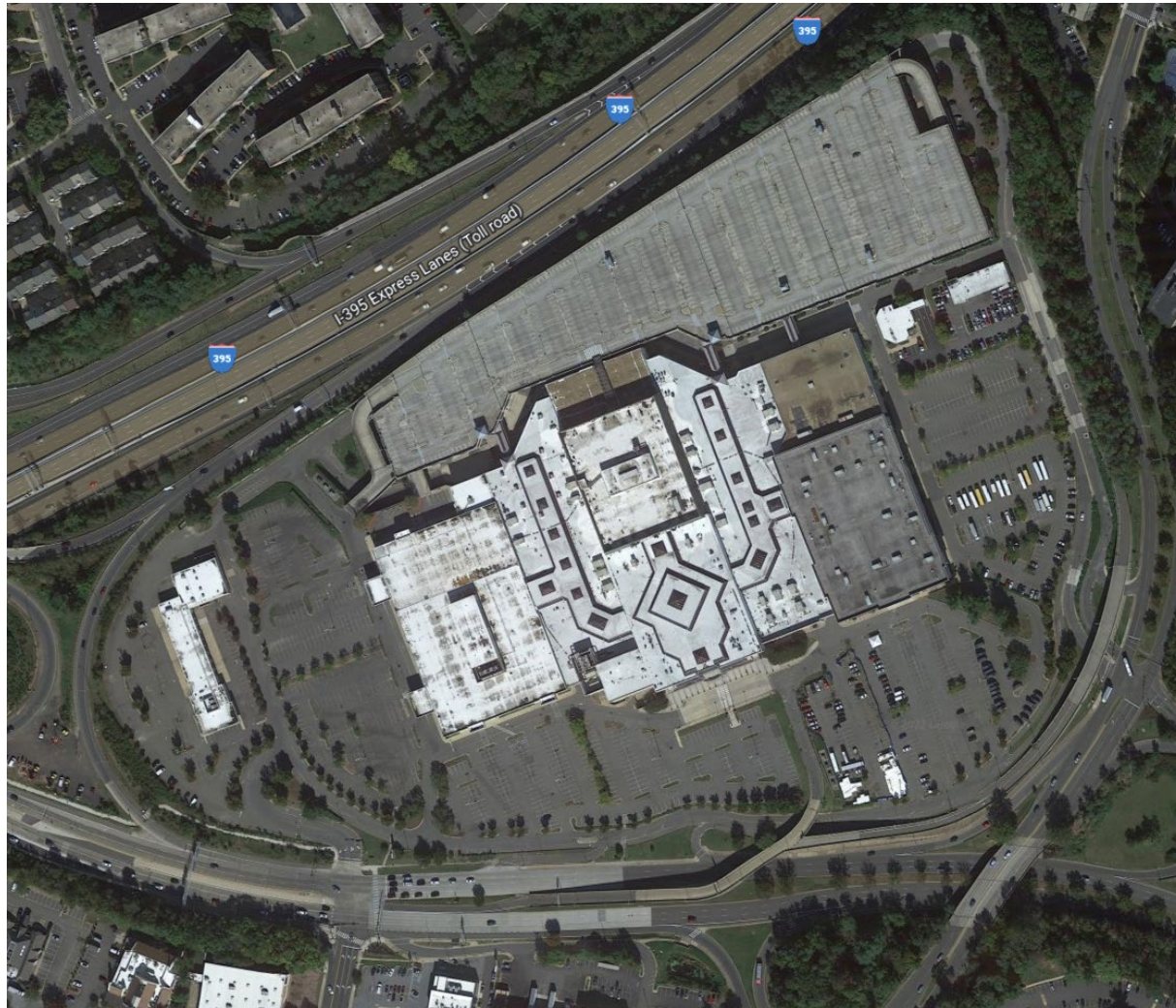
PRE-CONSTRUCTION DEMOLITION MEETING

Transit Hub Relocation



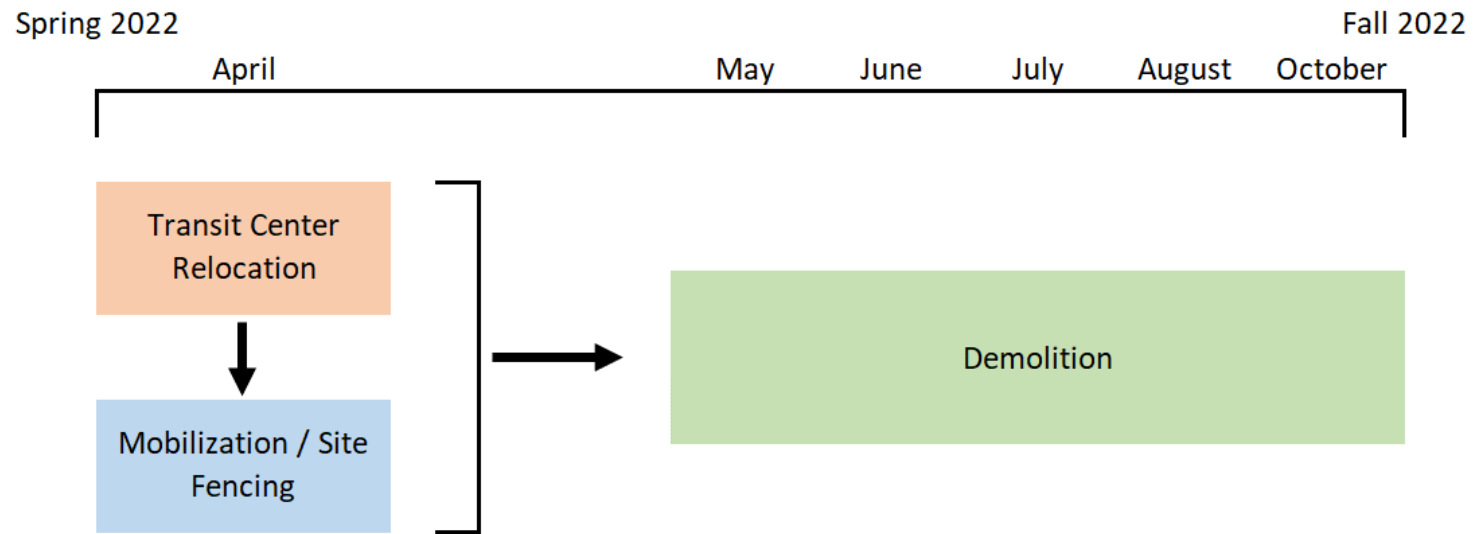
PRE-CONSTRUCTION DEMOLITION MEETING

Scope of Work



PRE-CONSTRUCTION DEMOLITION MEETING

Tentative Schedule



PRE-CONSTRUCTION DEMOLITION MEETING

Scope of Work



Landmark Mall Infrastructure

4/12/2022

1. Demolition

Keynotes

1. Site Fence
2. Bus Transit Center
3. Recycled Concrete Stockpile
4. Demo Arlington Forest Garage
5. Demo Mall from East to West (incl. bridges and ramp to parking garage)
6. Demo Sears Service Center
7. Demo Existing Onsite Flyover (North Van Dorn St. Phase 1)
8. Demo SunTrust Bank Building
9. Close Right Lane of NVD toward Duke St. Demo existing Flyover Ramp which goes over Road 5

Duration: Approx. 6 Months

Legend

- Construction Roads
- Demolition Work
- Site Entrances
- Temporary Signalization Required



PRE-CONSTRUCTION DEMOLITION MEETING

Haul Routes



Landmark Mall Infrastructure

4/12/2022

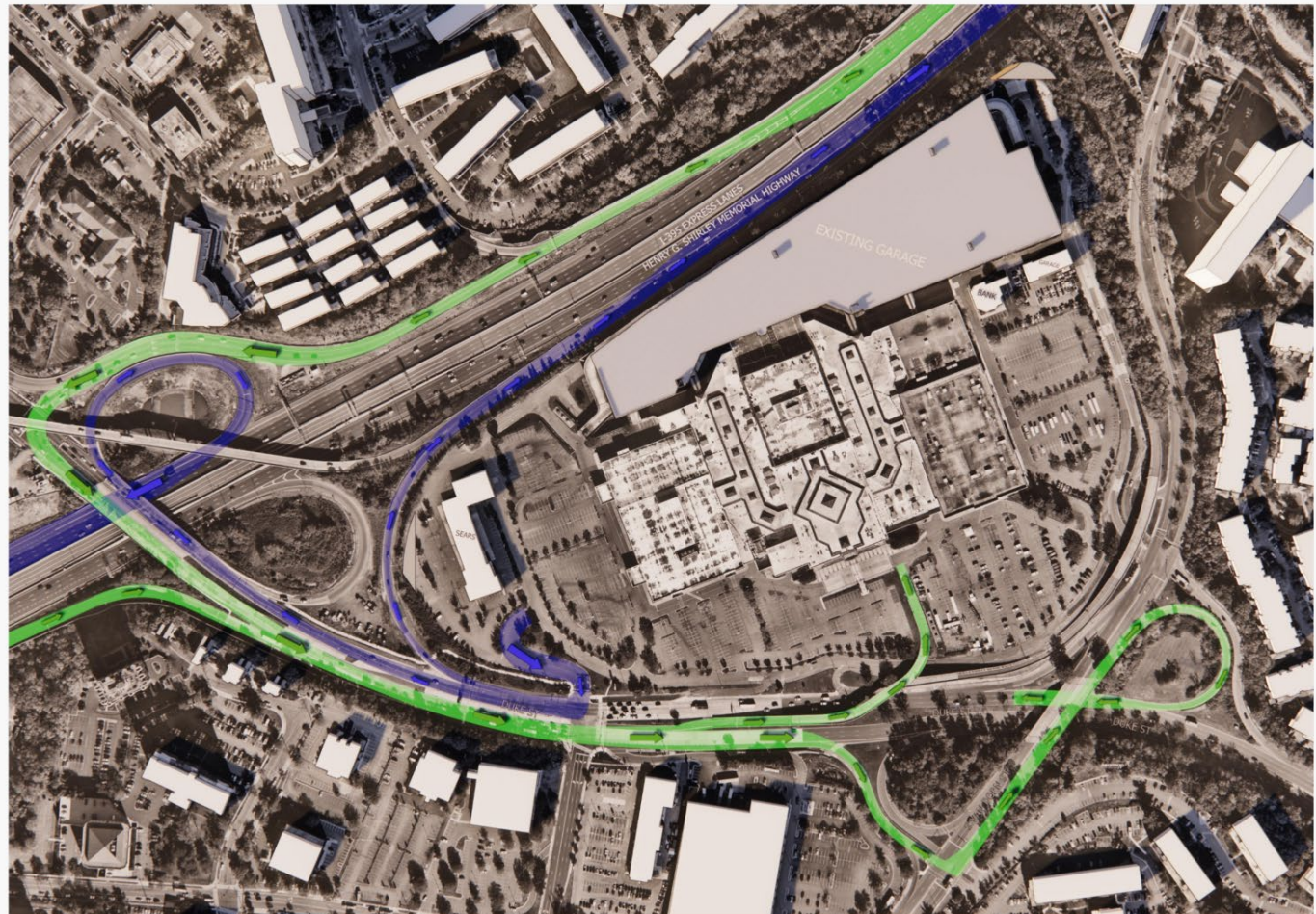
2. Haul Routes

Keynotes

1. Incoming construction traffic will access site via Duke St.
2. Outgoing construction traffic will exit the site at the existing signalized intersection of Duke St. and S. Walker St.

Legend

-  Site Entrances
-  Outgoing Construction Traffic
-  Incoming Construction Traffic



PRE-CONSTRUCTION DEMOLITION MEETING

Work Hours / Methods

- Hours
 - Monday – Friday
 - 7:00 AM – 6:00 PM
 - Saturday
 - 9:00 AM – 6:00 PM
- Equipment
 - Excavators with attachments
 - Munchers
 - Hoe Rams
 - Shears
 - Loaders
 - Concrete Crushers/Screeners



QUESTION & ANSWER

- Upcoming In-Person Meetings:
 - Parks & Rec Commission: April 21
 - LMVD/EW Implementation Group: April 27

westend@foulgerpratt.com